



PALM ISLAND ABORIGINAL SHIRE COUNCIL  
1 MAIN STREET, PALM ISLAND Q 4816  
Ph: 07 47 700 200  
WEBSITE: [www.palmcouncil.qld.gov.au](http://www.palmcouncil.qld.gov.au)  
ABN: 68 799 811 816

Wednesday 4<sup>th</sup> October 2023

## UPCOMING RAMP & JETTY CLOSURES

# COMMUNITY NOTICE

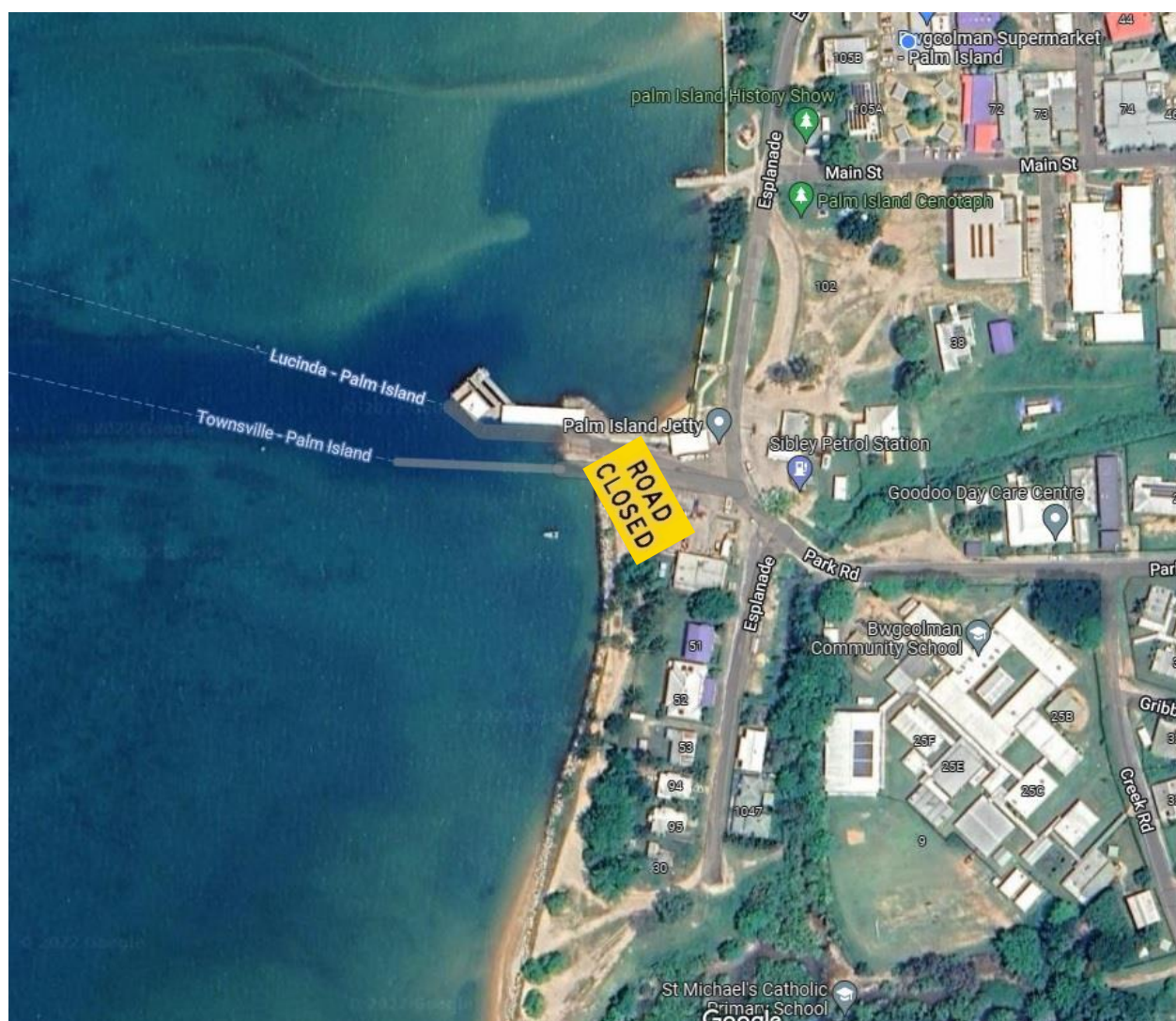
**Ramp & Jetty closure for OFFLOADING OF FUEL FOR COUNCIL PROJECTS 6AM-4PM(SATURDAY)**

**ALL DAY SATURDAY 7<sup>TH</sup> OCTOBER 2023**

**NO ACCESS FOR TRAFFIC WHILE UNLOADING MATERIALS**

**THERE IS TO BE NO SWIMMING AT THE JETTY OR AROUND RAMP AREA WHILE THE VESSEL IS IN.**

Residents are advised to take precautions and supervise children in this area. Residents are requested to use the Stone Jetty Ramp for the launching of boats. We apologise for the inconvenience. Emergency Services (Police, QAS etc) will still be able to access the road. There will be appropriate traffic management and detour signs in place.



**PLEASE CALL COUNCIL IF YOU HAVE QUESTIONS.**